

# Coal Age<sup>®</sup>

The Magazine for Coal Mining and Processing Professionals

MAY 2014 | A Mining Media Publication | [www.mining-media.com](http://www.mining-media.com)

## IMEX2014

INTERNATIONAL MINING CONFERENCE & EXPO



September 23-25, 2014

Las Vegas Convention Center

Las Vegas, NV USA

Five Incredible Conference Tracks. One Great Show.  
IMEX2014 is a New Kind of Mining Event.

**Register Today and Save!**  
Visit Our Website Now for Early Bird Pricing

PRESENTED BY

MINING MEDIA  
INTERNATIONAL

E&M ENGINEERING AND  
MINING JOURNAL

Coal Age

EQUIPO  
MINERO

The ASIA Miner

Mining & Technology  
AUSTRALIA  
LEADING THE WAY IN MINING INNOVATION

[WWW.IMEX2014.COM](http://WWW.IMEX2014.COM)



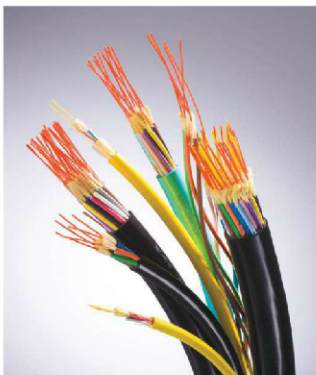
particle aggregates rise to the top of the denser teeter bed and overflow the top of the separation chamber.

Hydrophilic particles that do not attach to the air bubbles continue to move down through the teeter bed and eventually settle into the dewatering cone. These particles are discharged as a high-solids stream through a control valve at the bottom of the separator.

<http://efd.eriez.com/Products/Index/Hydrofloat>

### Fiber Optic Systems

For locations that require compliance with the Mine Safety and Health Administration's (MSHA) Part 7, Subpart K of Title 30 of the Code of Federal Regulations (CFR) signal cables mining applications, Optical Cable Corp. typically recommends its MSHA-rated B-Series Breakout Cable. MSHA cables are designed to withstand the rigors of difficult pulls, high tensile loading and severe crush occurrences and can repeatedly endure the abuse associated with the extreme demands in surface and subsurface mining. The B-Series Breakout Cable is one of OCC's most



rugged, high strength cables. Each individual, color-coded sub-cable has its own tight-buffered coating to protect each fiber. In addition, these cables have a tight-bound outer jacket, which is pressure extruded directly over the cable's core. This combination of a helically stranded core, and a pressure extruded outer jacket provides an overall cable construction that

offers crush and impact protection and increased tensile strength.

As an alternative, if cost is an issue and the conditions warrant it, MSHA-rated distribution style cabling is an alternative. This cable is also extremely rugged, featuring the helically stranded core and extruded outer jacket, but not the additional 2.5-mm subcable for each fiber. [www.occfiber.com](http://www.occfiber.com)

### Double-deck Screen

The double-deck MR-7 from Midwestern Industries allows materials to be separated from an approximately 1-in. opening on the top deck to a separation down to 1/8-in. opening on the bottom screening deck. The 48-in. x 84-in. MR-7 Screener, complete with 2 HP, 230/460-volt, 3-Phase, 60-cycle, 1,750-RPM motor, V-drive components, and belt guard and conveyor installation carriage members. One unique aspect of the MR-7 is the end-tensioned screen panels, which enable conveyed materials to move along the full-screen surface until discharge. The entire width of the MR-7 is utilized to full capacity, virtually ensuring the elimination of dead areas. The end-tensioned screen panels are easily changed for screening without costly downtime.

[www.midwesternind.com/conveyor\\_screener\\_mr7.html](http://www.midwesternind.com/conveyor_screener_mr7.html)



### MSHA Approves Bi-di Line of Leaky Feeder Amplifiers

The PBE Group received MSHA approval for the new Bidirectional Line Amplifier Model BDA-4. It provides local and

**SUSPENDED MAGNETS**

**TRUSTED PERFORMANCE... WORLDWIDE!**

**WET DRUM SEPARATOR**

Contact: 800/486-6446

**Starns OHIO MAGNETICS**

AFFILIATE OF IBD INDUSTRIES, INC.

[sales@ohiomagnetics.com](mailto:sales@ohiomagnetics.com) • [www.ohiomagnetics.com](http://www.ohiomagnetics.com)

OHIO MAGNETICS, INC.  
ISO 9001  
2008  
CERTIFIED